

# Rcconf

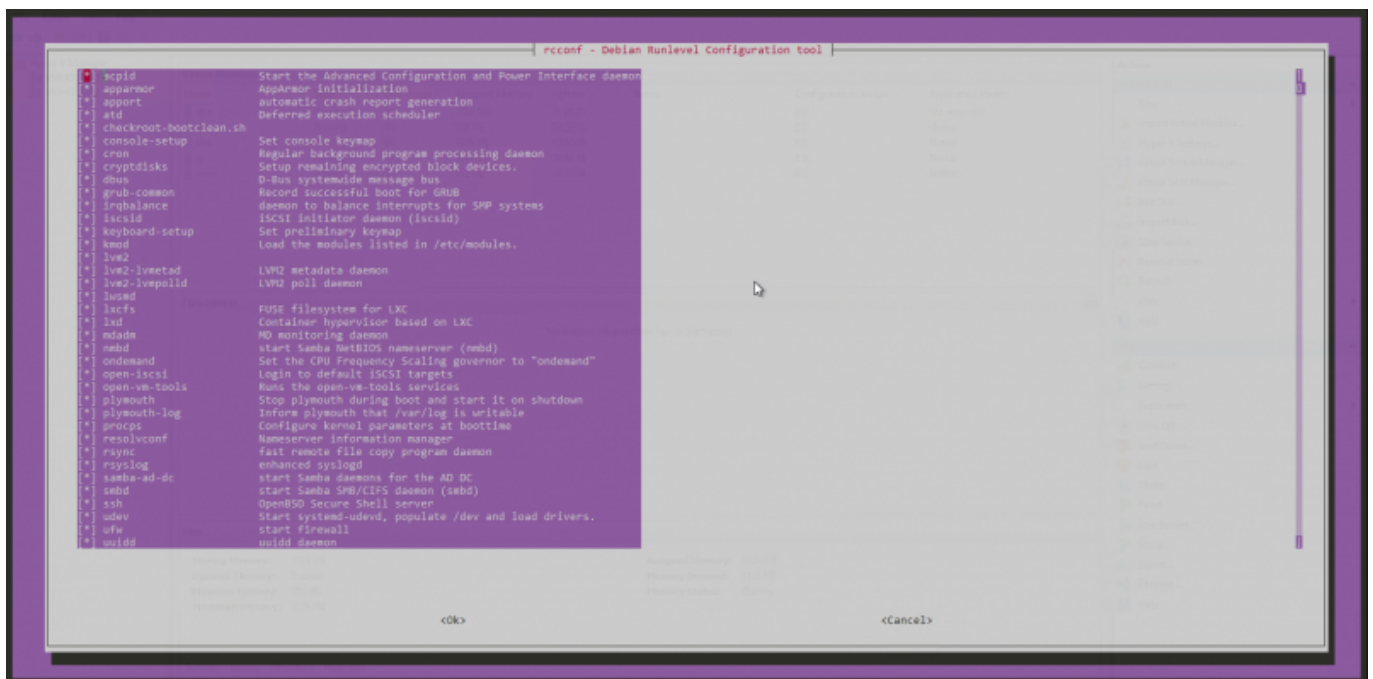
Rcconf is runlevel configuration tool that can be run only via the terminal. To install it under Ubuntu, run this command:

```
sudo apt-get install rcconf
```

Start it now with this command:

```
rcconf
```

Use your keyboard direction keys, Spacebar, TAB key to switch on/off startup services



From:  
<https://wiki.plecko.hr/> - **Eureka Moment**

Permanent link:  
<https://wiki.plecko.hr/doku.php?id=linux:misc:rcconf>

Last update: **2019/10/31 09:05**

